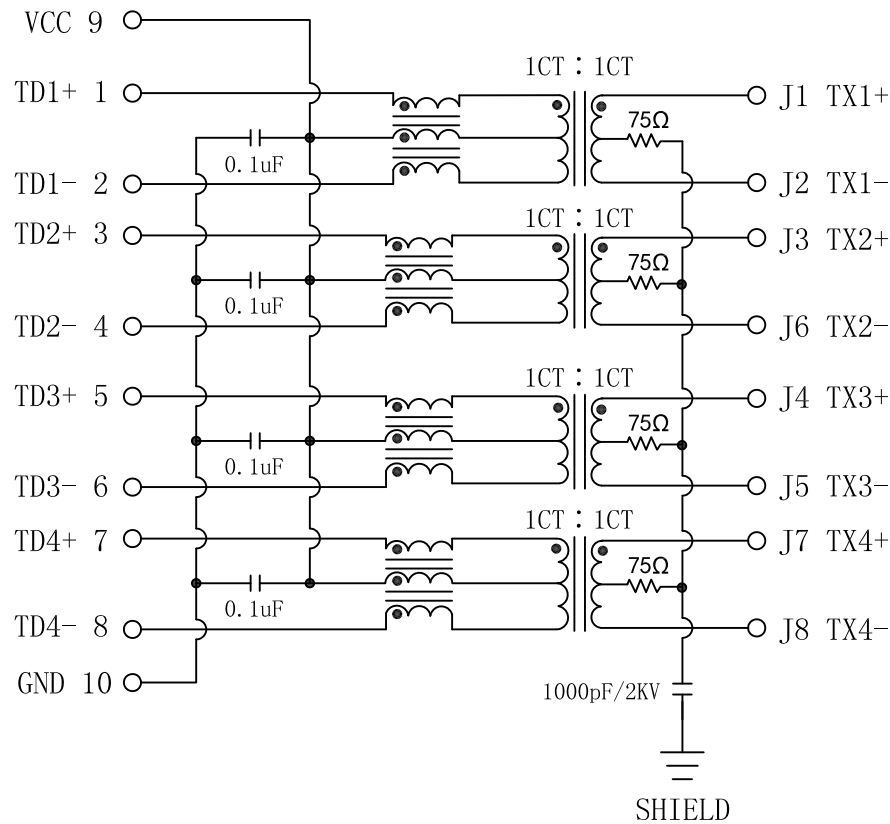


# Schematic:

| REV. | ECN NO. | DESCRIPTION | DATE       | APPD |
|------|---------|-------------|------------|------|
| A    | REL     |             | 2018/07/16 |      |

INPUT

OUTPUT



Electrical Specifications @25°C

1. Turns Ratio:

$$\text{PRI:SEC} = 1\text{CT:1CT} \pm 2\%$$

2. OCL:

120uH MIN @ 100KHz, 100mV, 0mADC

3. Insertion Loss:

200~400MHz: >-2.0dB

400~500MHz: >-3.0dB

4. Return Loss:

40~400MHz: <-16.0dB+10\*Log

400~500MHz: <-6.0dB+30\*Log

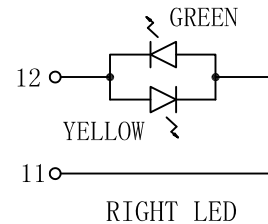
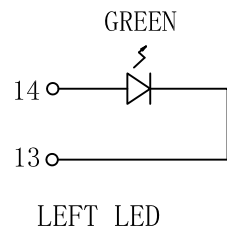
5. Crosstalk (dB TYP):

150~500MHz: -30dB MIN

6. CMC: 150~500MHz: -25dB MIN

7. Isolation: 1500Vrms MIN

8. Operating Temperature Range: -40°C ~ +85°C.

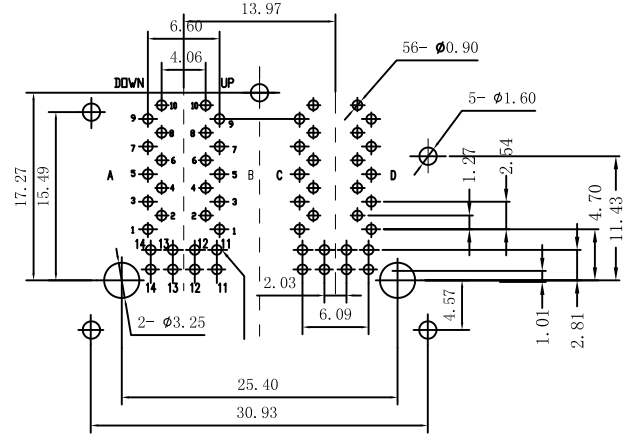
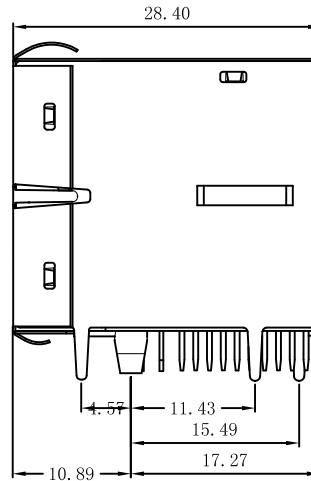
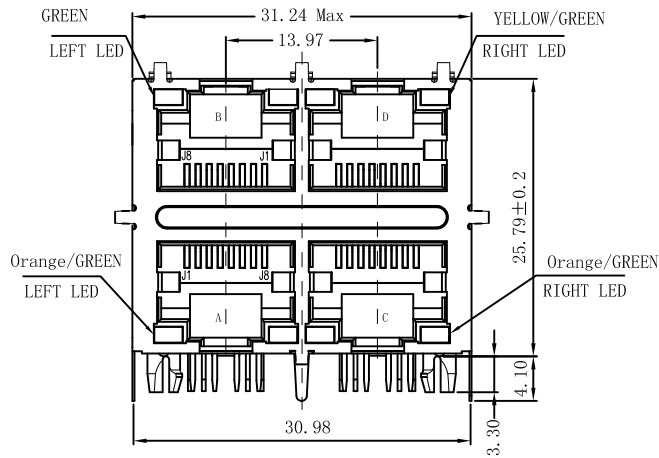


| Emitting Color | $\lambda$ p(nm) | VF@IF=20mA | IR @VR=5V      |
|----------------|-----------------|------------|----------------|
| GREEN          | 565             | 1.8-2.6V   | 10 $\mu$ A max |
| YELLOW         | 585             | 1.8-2.6V   | 10 $\mu$ A max |

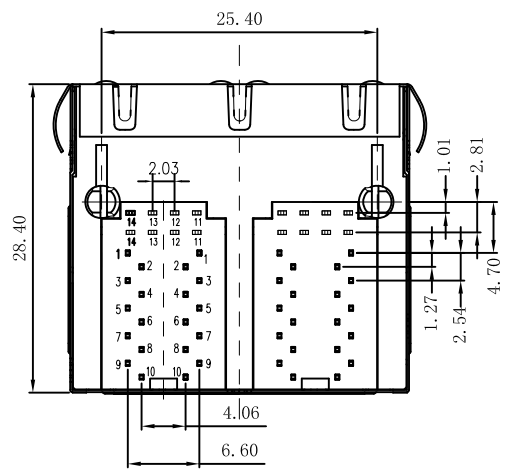
|        |               |            |                                                 |
|--------|---------------|------------|-------------------------------------------------|
| X:X    | $\pm 0.30$    | APPD:      | LINK-PP INT'L TECHNOLOGY CO., LIMITED           |
| X:XX   | $\pm 0.25$    | CHKD:      |                                                 |
| X:XXX  | $\pm 0.05$    | DR: James  | TITLE: RJ45 .Transformer. 10G Base-T W/LED. 2x2 |
| ANGLES | $\pm 1^\circ$ | UNIT: mm   | PART NO.: LPJM28549A92NL                        |
|        | SCALE: 2/1    | SHEET: 1/2 | REV: A DWG NO.: LP18071668                      |

# Mechanical:

| REV. | ECN NO. | DESCRIPTION | DATE       | APPD |
|------|---------|-------------|------------|------|
| A    | REL     |             | 2018/07/16 |      |



SUGGESTED PCB LAYOUT (TOP VIEW)



## NOTES:

1. Designed to support application, such as SOHO (ADSL modems), LAN-on-Motherboard (LOM), hub and Switches.
2. Meets IEEE 802.3 specification
3. Connector Materials:  
 Housing: Thermoplastic UL94V-0  
 Contact/Shield: Copper alloy  
 Shield plating: Nickel  
 Contact plating: Gold 6 micro-inches min. In contact area.
4. Wave solder tip temperature: 265°C Max  
 Wave solder tip temperature time: 5 Sec Max
5. UL Certification: File Number E484635



|        |            |            |                                                 |
|--------|------------|------------|-------------------------------------------------|
| X:X    | ±0.30      | APPD:      | LINK-PP INT'L TECHNOLOGY CO., LIMITED           |
| X:XX   | ±0.25      | CHKD:      |                                                 |
| X:XXX  | ±0.05      | DR: James  | TITLE: RJ45 .Transformer. 10G Base-T W/LED. 2×2 |
| ANGLES | ±1°        | UNIT: mm   | PART NO.: LPJM28549A92NL                        |
|        | SCALE: 2/1 | SHEET: 2/2 | REV: A DWG NO.: LP18071668                      |