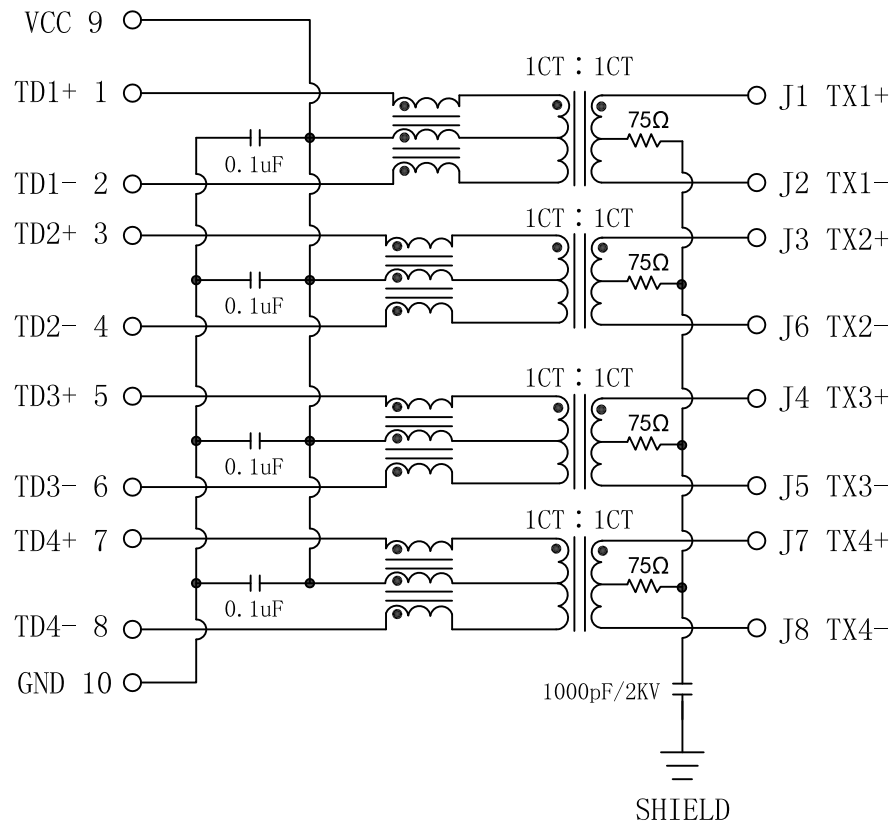


# Schematic:

REV.	ECN NO.	DESCRIPTION	DATE	APPD
A	REL		2018/07/16	

INPUT

OUTPUT



Electrical Specifications @25°C

1. Turns Ratio:

$$\text{PRI:SEC} = 1\text{CT}:1\text{CT} \pm 2\%$$

2. OCL:

120uH MIN @ 100KHz, 100mV, 0mADC

3. Insertion Loss:

200~400MHz: >-2.0dB

400~500MHz: >-3.0dB

4. Return Loss:

40~400MHz: <-16.0dB+10\*Log

400~500MHz: <-6.0dB+30\*Log

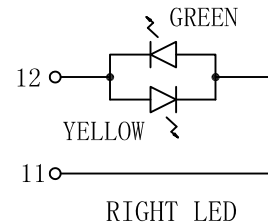
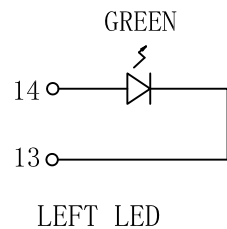
5. Crosstalk (dB TYP):

150~500MHz: -30dB MIN

6. CMC: 150~500MHz: -25dB MIN

7. Isolation: 1500Vrms MIN

8. Operating Temperature Range: -40°C ~ +85°C.

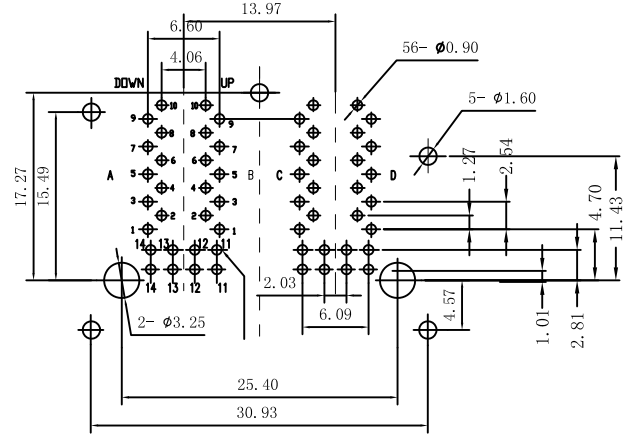
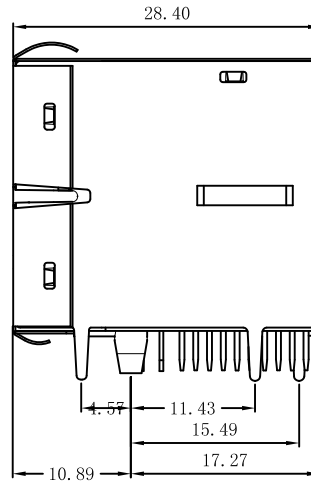
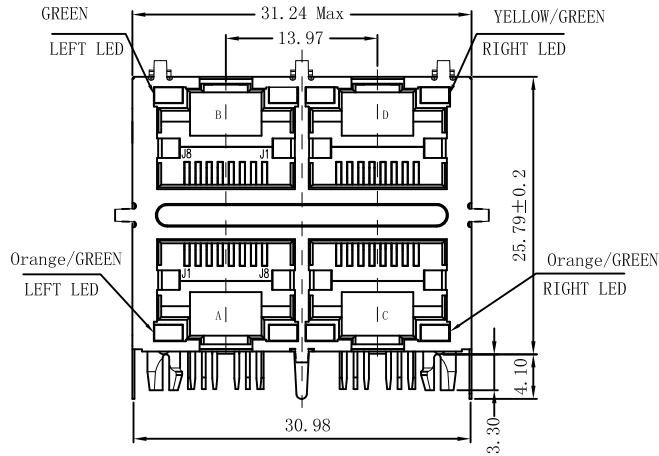


Emitting Color	$\lambda$ p(nm)	V <sub>F</sub> @I <sub>F</sub> =20mA	I <sub>R</sub> @V <sub>R</sub> =5V
GREEN	565	1.8-2.6V	10 $\mu$ A max
YELLOW	585	1.8-2.6V	10 $\mu$ A max

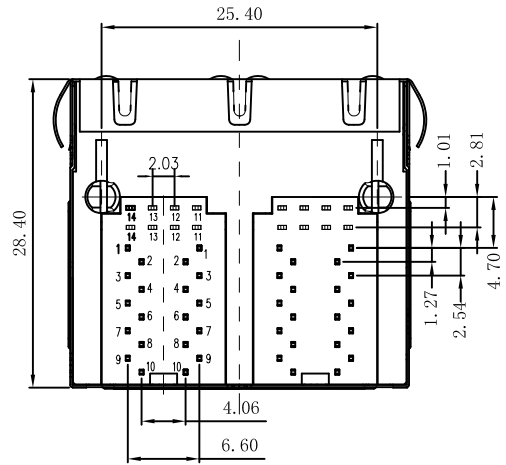
X:X	$\pm 0.30$	APPD:	LINK-PP INT'L TECHNOLOGY CO., LIMITED
X:XX	$\pm 0.25$	CHKD:	
X:XXX	$\pm 0.05$	DR: James	TITLE: RJ45 .Transformer. 10G Base-T W/LED. 2x2
ANGLES	$\pm 1^\circ$	UNIT: mm	PART NO.: LPJM27549A92NL
	SCALE: 2/1	SHEET: 1/2	REV: A
			DWG NO.: LP18071668

# Mechanical:

REV.	ECN NO.	DESCRIPTION	DATE	APPD
A	REL		2018/07/16	



SUGGESTED PCB LAYOUT (TOP VIEW)



## NOTES:

1. Designed to support application, such as SOHO (ADSL modems), LAN-on-Motherboard (LOM), hub and Switches.
2. Meets IEEE 802.3 specification
3. Connector Materials:  
 Housing: Thermoplastic UL94V-0  
 Contact/Shield: Copper alloy  
 Shield plating: Nickel  
 Contact plating: Gold 6 micro-inches min. In contact area.
4. Wave solder tip temperature: 265°C Max  
 Wave solder tip temperature time: 5 Sec Max
5. UL Certification: File Number E484635



X:X	±0.30	APPD:	LINK-PP INT'L TECHNOLOGY CO., LIMITED
X:XX	±0.25	CHKD:	
X:XXX	±0.05	DR: James	TITLE: RJ45 .Transformer. 10G Base-T W/LED. 2×2
ANGLES	±1°	UNIT: mm	PART NO.: LPJM27549A92NL
	SCALE: 2/1	SHEET: 2/2	REV: A DWG NO.: LP18071668