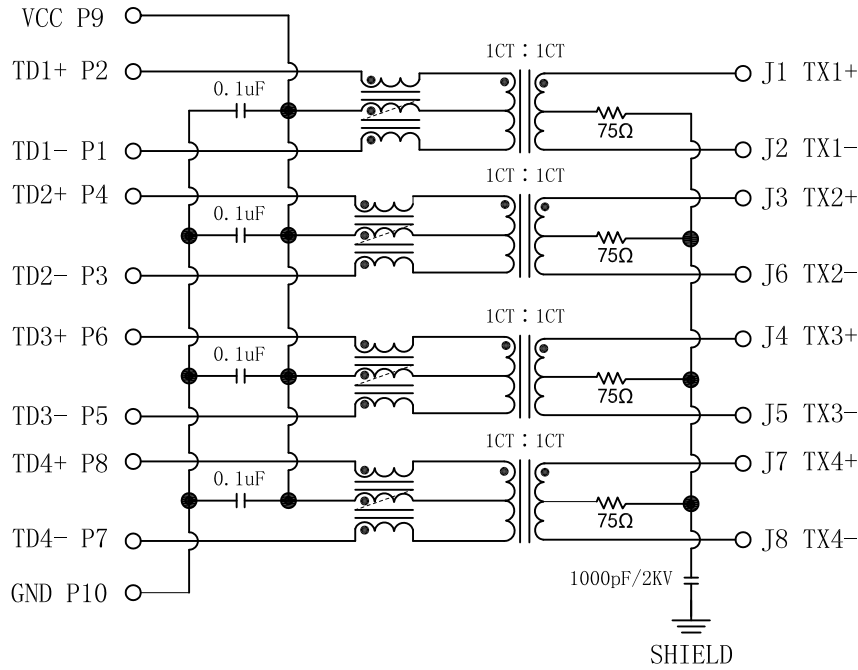


Schematic:

REV.	ECN NO.	DESCRIPTION	DATE	APPD
A	REL		2015/05/13	

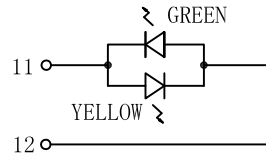
PC BOARD CONNECTIONS



RJ45 CONNECTOR

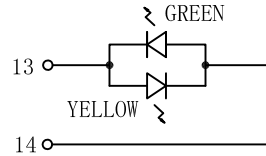
Electrical Specifications @25°C

1. OCL: 350uH Min
@100KHz, 0.1Vrms, 8mA DC Bias.
2. Turns Ratio(±2%): 1CT : 1CT
3. Insertion Loss(dB Max):
0.1-1MHz:-1.1 1-65MHz:-0.5
65-100MHz:-0.8 100-125MHz:-1.2
4. Return Loss(dB Min @100 Ω ±15%):
0.5-40MHz:-18
40-100MHz:-12+20LOG(f/80MHz)
5. Crosstalk:
0.1-100MHz:-30dB Min
6. CM to CM Rej:
0.1-100MHz:-30dB Min
7. CM to DM Rej:
0.1-100MHz:-35dB Min
8. Hipot: 1500Vac 60s or 2250Vdc 60s.
9. Operating Temperature: -40°C ~ +85°C.



LEFT LED

LED POLARITY		COLOR
PIN 11	PIN 12	
+	-	YELLOW
-	+	GREEN



RIGHT LED

LED POLARITY		COLOR
PIN 13	PIN 14	
+	-	YELLOW
-	+	GREEN

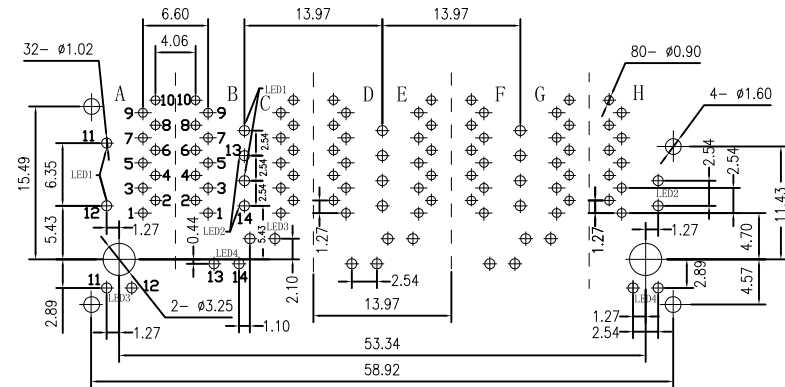
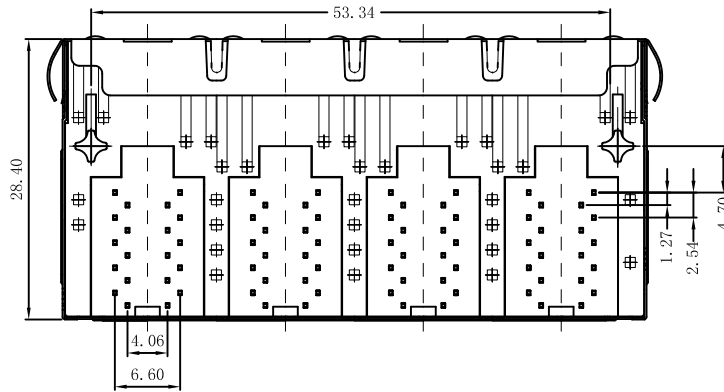
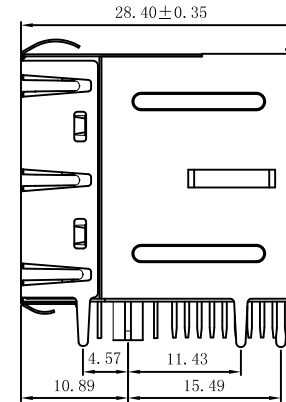
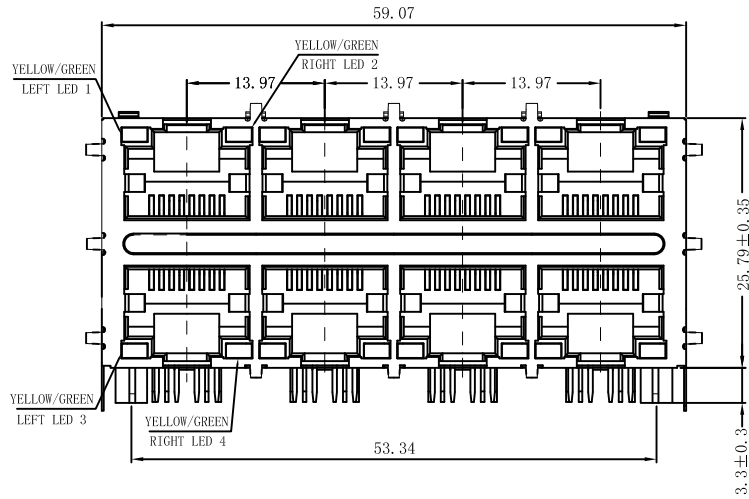


Emitting Color	λ p(nm)	VF@IF=20mA	IR @VR=5V
GREEN	565	1.8~2.6V	10 μ A max
YELLOW	585	1.8~2.6V	10 μ A max

X:X	±0.30	APPD:	LINK-PP LINK-PP INT'L TECHNOLOGY CO., LIMITED
X:XX	±0.25	CHKD:	
X:XXX	±0.05	DR: TOM	TITLE: RJ45 .Transformer.1000 Base-T W/LED. 2×4 Port
ANGLES	±1°	UNIT: mm	PART NO.: LPJG47038A47NL
	SCALE: 2/1	SHEET: 1/2	REV: A DWG NO.: LP15051301

Mechanical :

REV.	ECN NO.	DESCRIPTION	DATE	APPD
A	REL		2015/05/13	



SUGGESTED PCB LAYOUT <TOP VIEW>

NOTES:

1. Designed to support application, such as SOHO (ADSL modems), LAN-on-Motherboard (LOM), hub and Switches.
2. Meets IEEE 802.3at specification
3. Connector Materials:
Housing: Thermoplastic UL94V-0
Contact/Shield: Copper alloy
Shield plating: Nickel
Contact plating: Gold 6 micro-inches min. In contact area.
4. Wave solder tip temperature: 265°C Max, 5 Sec Max.



X:X ±0.30	APPD:	LINK-PP LINK-PP INT'L TECHNOLOGY CO., LIMITED
X:XX ±0.25	CHKD:	
X:XXX ±0.05	DR: TOM	TITLE: RJ45 .Transformer. 1000 Base-T W/LED. 2×4 Port
ANGLES ±1°	UNIT: mm	PART NO. : LPJG47038A47NL
	SCALE: 2/1	SHEET: 2/2
	REV: A	DWG NO. : LP15051301