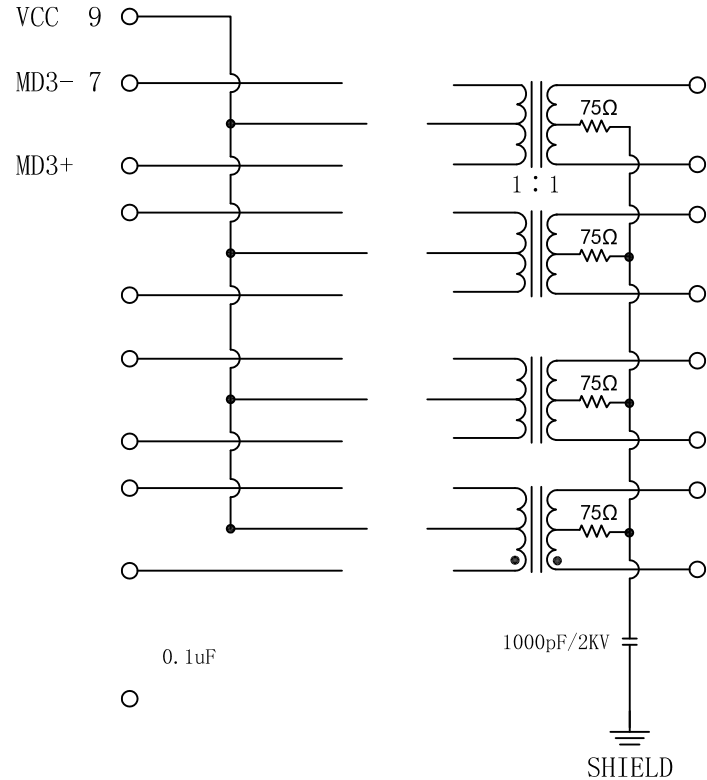


Schematic:

REV.	ECN NO.	DESCRIPTION	DATE	APPD
A	REL			

PCB CONNECTIONS



Electrical Specifications @ 25°C

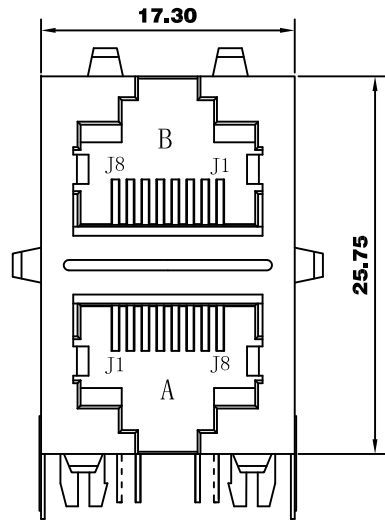
- Transmitter filter & Receiver filter
Type: Balance low pass 100Ω impedance
Insertion Loss:
1~65MHz: -1.0dB MAX
Return Loss:
1~10MHz: -20dB TYP. load 100Ω±15Ω
30MHz: -16dB TYP. load 100Ω±15Ω
60~80MHz: -12dB TYP. load 100Ω±15Ω
- Inductance (@ 100KHz, 0.1V, 8mA DC BIAS):
350uH MIN
- Crosstalk:
1~10MHz: -40dB MIN
32~60MHz: -35dB MIN
60~100MHz: -30dB MIN
- Common Mode Rejection:
1~50MHz: -30dB TYP
50~130MHz: -20dB TYP
- Hipot: 1500Vrms MIN @60Hz 1 MIN
- Operating Temperature: 0°C ~ +70°C.



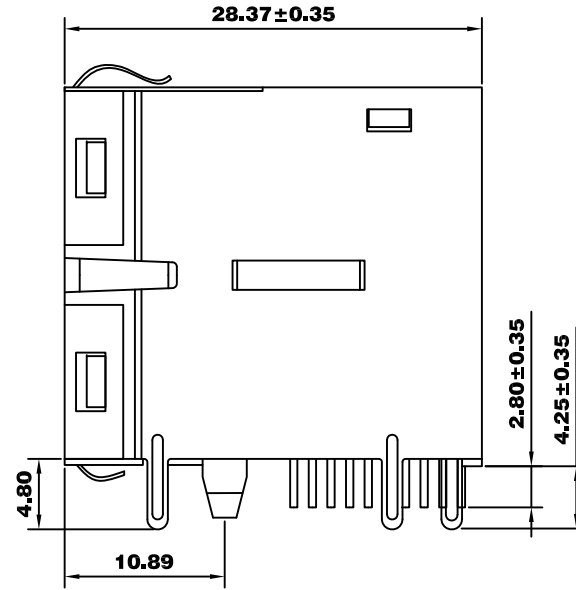
X:X	±0.30	APPD:		
X:XX	±0.25	CHKD:		
X:XXX	±0.05	DR:	TITLE: 2*1 RJ45 Connector with 1000 Base-T Integrated Magnetics	
ANGLES	±1°	UNIT: mm	PART NO. :	
	SCALE: 2/1	SHEET: 1/2	REV: A	DWG NO. :

Mechanical:

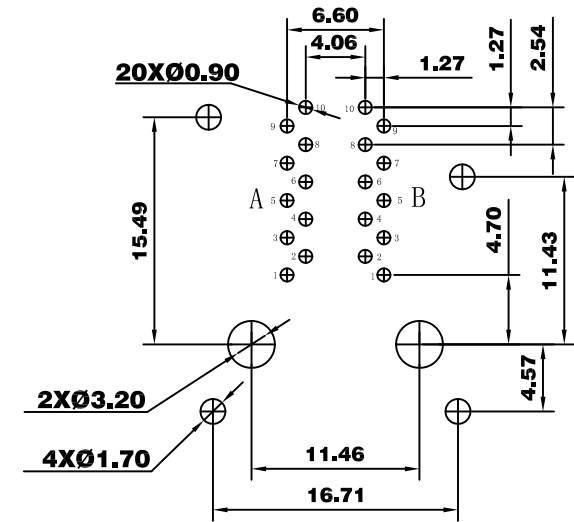
REV.	ECN NO.	DESCRIPTION	DATE	APPD
A	REL		2009-08-10	



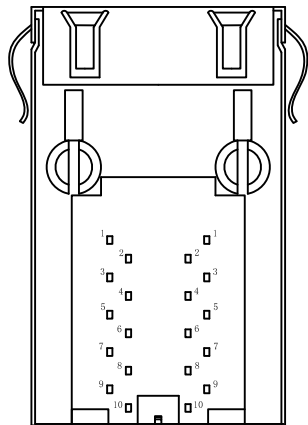
Front Side View



Left Side View



Suggested PCB Layout (Top View)



Bottom Side View



Top Side View

NOTES:

1. Designed to support application, such as SOHO (ADSL modems), LAN-on-Motherboard (LOM), hub and Switches.
2. Meets IEEE 802.3 specification
3. Connector Materials:
 Housing: Thermoplastic PBT+30%G.F UL94V-0
 Contact: Phosphor Bronze C5210R-EH Thickness=0.35mm
 Pins: Brass C2680R-H Thickness=0.35mm
 Shield: SUS 201-1/2H Thickness=0.2mm
 Contact plating: Gold 6 micro-inches min. In contact area.
4. Wave solder tip temperature: 265°C Max, 5 Sec Max



X:X	±0.30	APPD:	LINK-PP INT'L TECHNOLOGY CO., LIMITED	
X:XX	±0.25	CHKD:	TITLE: 2*1 RJ45 Connector with 1000 Base-T Integrated Magnetics	
X:XXX	±0.05	DR: TOM	PART NO.: LPJG17547CNL	
ANGLES	±1°	UNIT: mm	DWG NO.: LP09081002	
	SCALE: 2/1	SHEET: 2/2	REV: A	