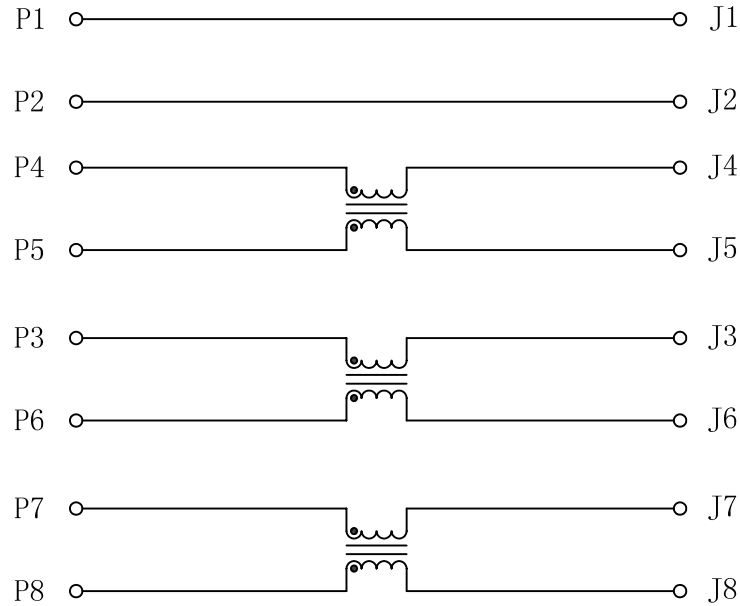


Schematic:

REV.	ECN NO.	DESCRIPTION	DATE	APPD
A	REL		2010/08/12	

PCB CONNECTIONS



RJ45 CONNECTOR

ELECTRICAL SPECIFICATIONS @25°C

1. INDUCTANCE:

(P3-J3), (P4-J4), (P7-J7):
65uH TYP @0.05V, 10KHz

2. DC RESISTANCE:

P8-J8=P7-J7 : 0.5 OHM MAX
P6-J6=P3-J3 : 0.5 OHM MAX
P5-J5=P4-J4 : 0.5 OHM MAX

3. COMMON MODE ATTENUATION:

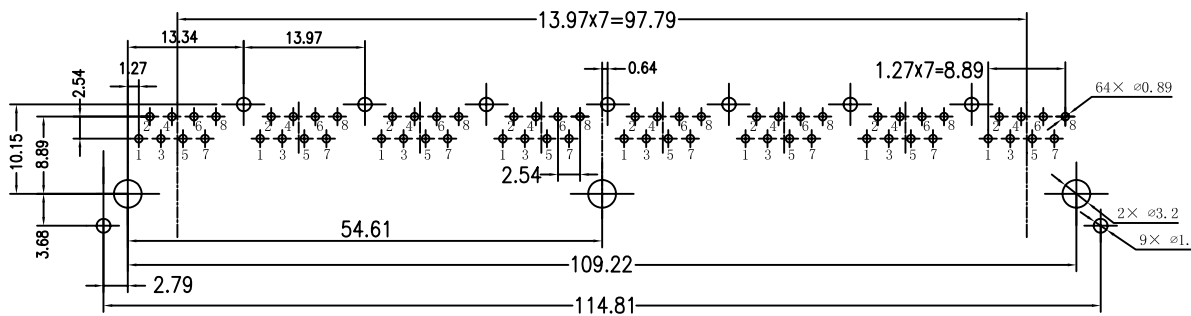
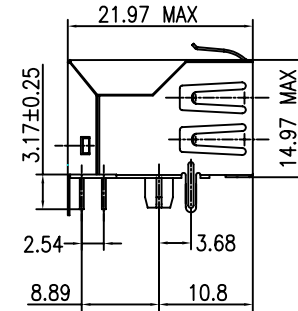
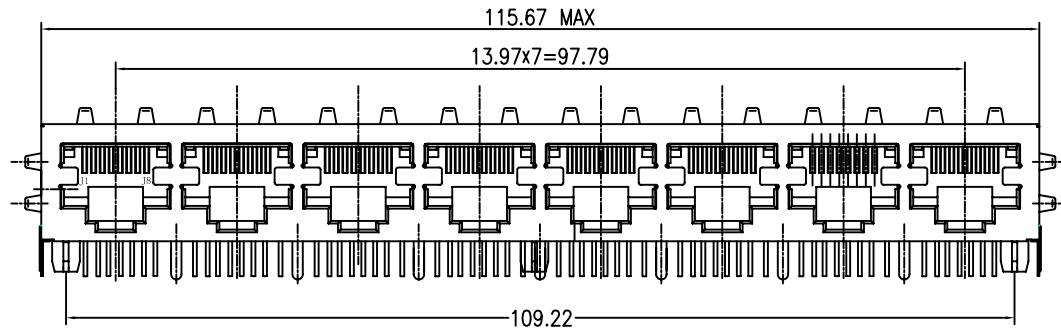
1MHz @ -8dB TYPICAL -5dB MIN
5MHz @ -17dB TYPICAL -15dB MIN
20MHz @ -23dB TYPICAL -15dB MIN
70MHz @ -25dB TYPICAL -20dB MIN
200MHz @ -22dB TYPICAL -17dB MIN
500MHz @ -11dB TYPICAL -6dB MIN



X:X	±0.20	APPD:	LINK-PP INT'L TECHNOLOGY CO., LIMITED	
X:XX	±0.10	CHKD:	TITLE: RJ45 COMMON MODE CHOKE & 1×8 PORT	
X:XXX	±0.05	DR: TOM	PART NO.: LPJF86261CNL	
ANGLES	±1°	UNIT: mm	REV: A DWG: LP10081210	
	SCALE: 2/1	SHEET: 1/2		

Mechanical:

REV.	ECN NO.	DESCRIPTION	DATE	APPD
A	REL		2010/08/12	



SUGGESTED PCB LAYOUT (TOP VIEW)

NOTES:

1. Designed to support application, such as SOHO (ADSL modems), LAN-on-Motherboard (LOM), hub and Switches.
2. Meets IEEE 802.3 specification
3. Connector Materials:
 Housing: Thermoplastic UL94V-0
 Contact/Shield: Copper alloy
 Shield plating: Nickel
 Contact plating: Gold 6 micro-inches min. In contact area.
4. Wave solder tip temperature: 265°C Max
 Wave solder tip temperature time: 5 Sec Max



X:X	±0.20	APPD:	LINK-PP INT'L TECHNOLOGY CO., LIMITED	
X:XX	±0.10	CHKD:	TITLE: RJ45 COMMON MODE CHOKE & 1×8 PORT	
X:XXX	±0.05	DR: TOM	PART NO.: LPJF86261CNL	
ANGLES	±1°	UNIT: mm		
	SCALE: 2/1	SHEET: 2/2	REV: A	DWG: LP10081210