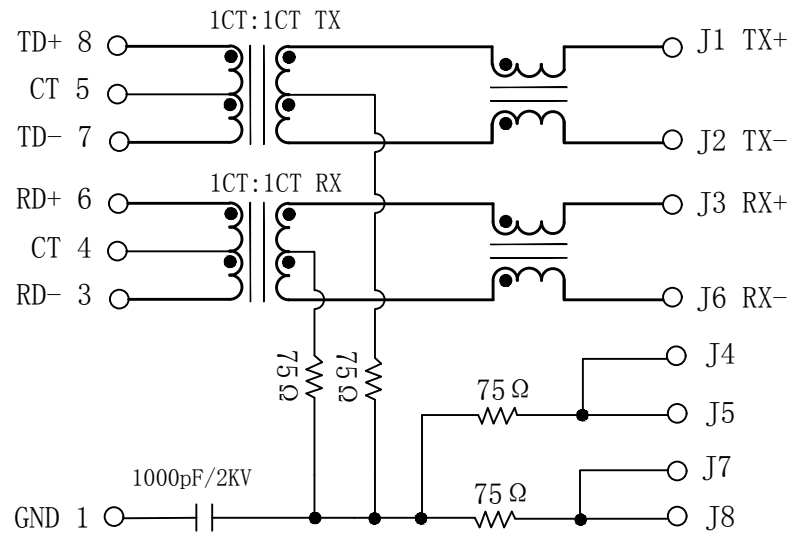


Schematic:

REV.	ECN NO.	DESCRIPTION	DATE	APPD
A6	REL		2022-12-22	

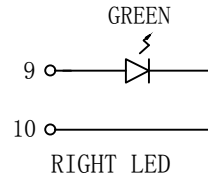
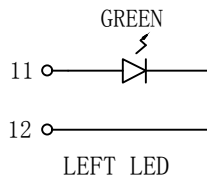
PC BOARD CONNECTIONS



RJ45 CONNECTOR

Electrical Specifications @25°C

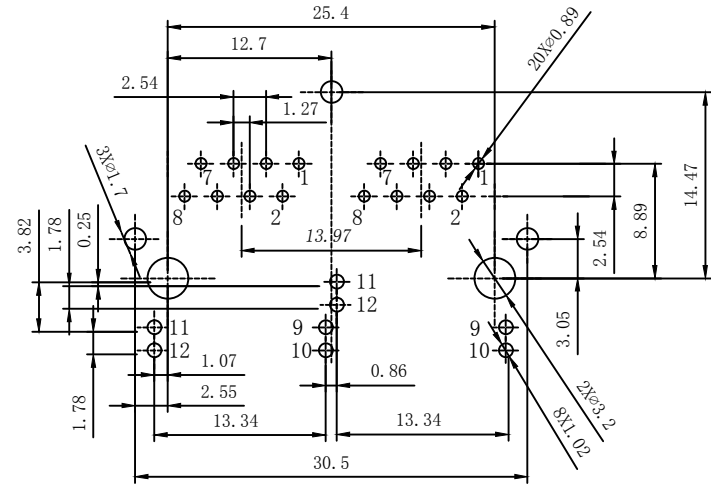
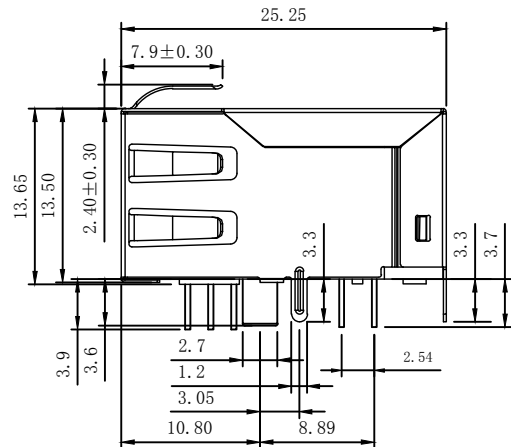
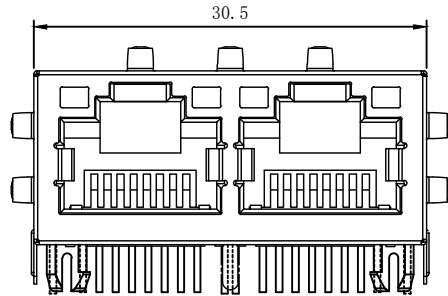
- Turns Ratio ($\pm 3\%$):
TX = 1CT:1CT RX = 1CT:1CT
- OCL: 350uH Min
@100KHz, 100mV, 8mADC Bias.
- Insertion Loss:
1~100MHz: -1.1dB Max
- Return Loss (dB Min):
1~30MHz: -18 30~60MHz: -15
60~80MHz: -12
- Crosstalk (dB Typ):
1~10MHz: -40
- Common to Common Mode Rejection (dB Min):
1~100MHz: -30
- Isolation PHY SIDE To Line SIDE : 1500Vrms
- Operating Temperature Range: 0°C ~ 70°C.



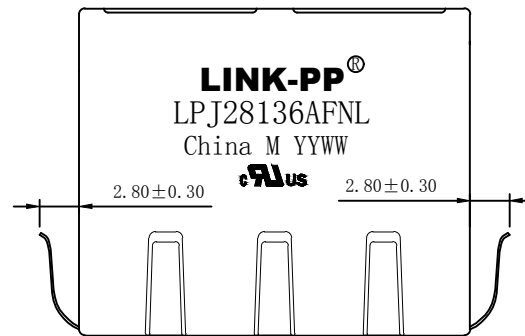
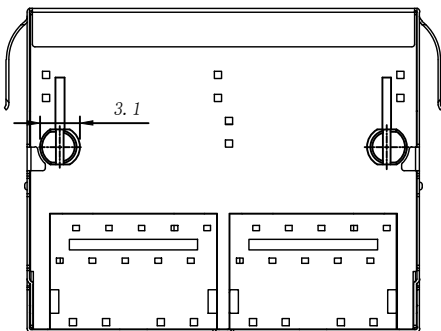
X:X	± 0.30	APPD: TOM	LINK-PP INT'L TECHNOLOGY CO., LIMITED
X:XX	± 0.25	CHKD: JAMES	
X:XXX	± 0.05	DR: LEO	
ANGLES	$\pm 1^\circ$	UNIT: mm	TITLE: RJ45 Connector With 10/100 Base-T Integrated Magnetic TAB UP
			PART NO.: LPJ28136AFNL
	SCALE: 2/1	SHEET: 1/2	REV: A6 DWG: LP22122201

Mechanical :

REV.	ECN NO.	DESCRIPTION	DATE	APPD
A6	REL		2022-12-22	



SUGGESTED PCB LAYOUT (TOP VIEW)



NOTES:

1. Designed to support application, such as SOHO (ADSL modems), LAN-on-Motherboard (LOM), hub and Switches.
2. Meets IEEE802.3 specification.
3. Connector Materials:
 Housing: Thermoplastic PBT+30%G.F UL94V-0
 Contact: Phosphor Bronze C5210R-EH Thickness=0.35mm
 Pins: Brass C2680R-H Thickness=0.35mm
 Shield: SUS 304-1/2H Thickness=0.2mm
 Contact plating: Gold 6 micro-inches min. In contact area.
4. Wave solder tip temperature: 250°C, 5 Sec.
5. UL Certification: File Number E484635.



X:X	±0.30	APPD: TOM	LINK-PP INT'L TECHNOLOGY CO., LIMITED
X:XX	±0.25	CHKD: JAMES	
X:XXX	±0.05	DR: LEO	
ANGLES	±1°	UNIT: mm	TITLE: RJ45 Connector With 10/100 Base-T Integrated Magnetic TAB UP
			PART NO.: LPJ28136AFNL
	SCALE: 2/1	SHEET: 2/2	REV: A6 DWG: LP22122201