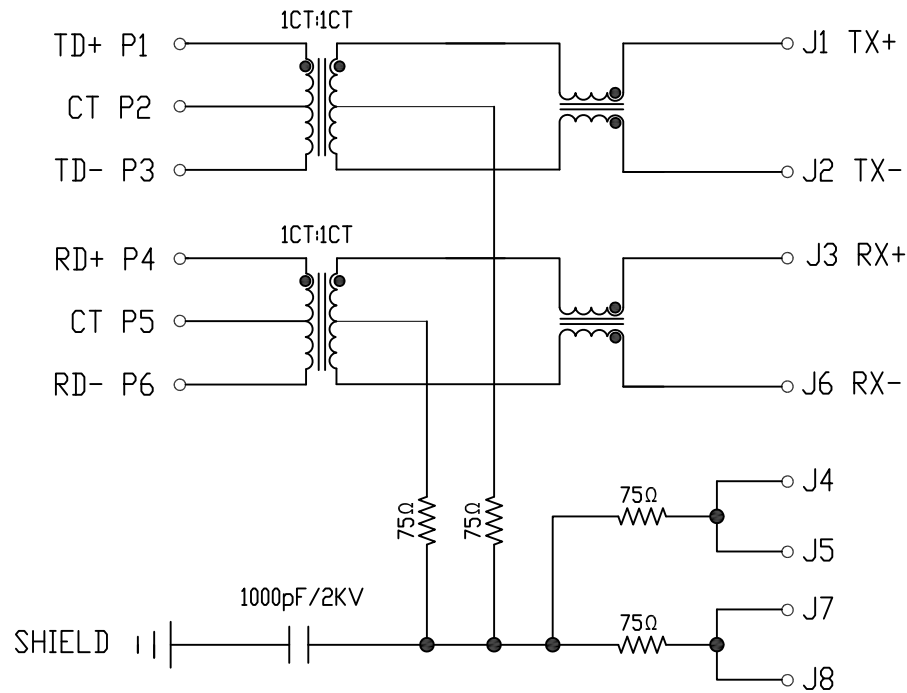


# Schematic:

REV.	ECN NO.	DESCRIPTION	DATE	APPD
A	REL		2015/10/27	

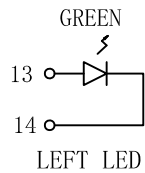
PCB CONNECTIONS



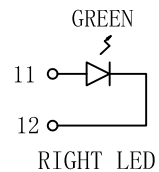
RJ45 CONNECTOR

## Electrical Specification @25°C

- Turns Ratio ( $\pm 2\%$ ):  
 (P1-P3) : (J1-J2) = 1:1  
 (P4-P6) : (J3-J6) = 1:1
- Inductance: 350uH MIN  
 @0.1V, 0.1MHz, 8mA DC Bias
- Return Loss:  
 1-30MHz: -18dB min  
 30-80MHz: -12dB min
- Insertion Loss:  
 0.1-100MHz: -1.2dB max
- Cross talk:  
 1-100MHz: -40dB
- Common to Mode Rejection  
 30-100MHz: -35dB
- Hipot: 1500Vrms
- Operating Temperature:  $-40^{\circ}\text{C} \sim +85^{\circ}\text{C}$ .



LED POLARITY		COLOR
PIN 13	PIN 14	
+	-	GREEN



LED POLARITY		COLOR
PIN 11	PIN 12	
+	-	GREEN

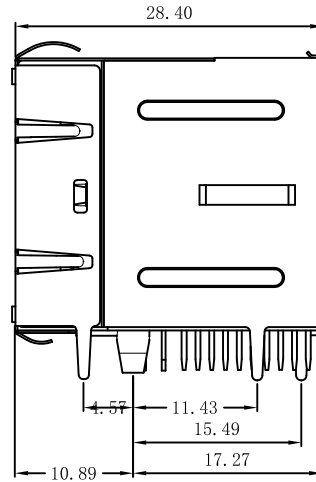
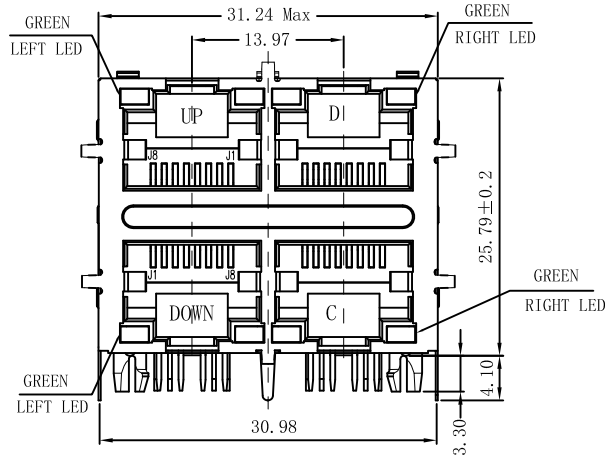


Emitting Color	$\lambda$ p(nm)	VF@IF=20mA	IR @VR=5V
GREEN	565	1.8~2.6V	10 $\mu$ A max

X:X	$\pm 0.30$	APPD:	LINK-PP INT'L TECHNOLOGY CO., LIMITED
X:XX	$\pm 0.25$	CHKD:	
X:XXX	$\pm 0.05$	DR: TOM	TITLE: RJ45 .Transformer. 10/100 Base-T W/LED. 2x2 Ports
ANGLES	$\pm 1^{\circ}$	UNIT: mm	PART NO.: LPJ27434AFNL
	SCALE: 2/1	SHEET: 1/2	REV: A DWG NO.: LP15102746

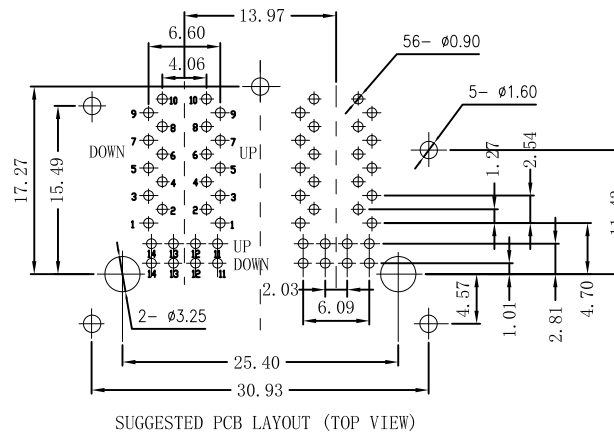
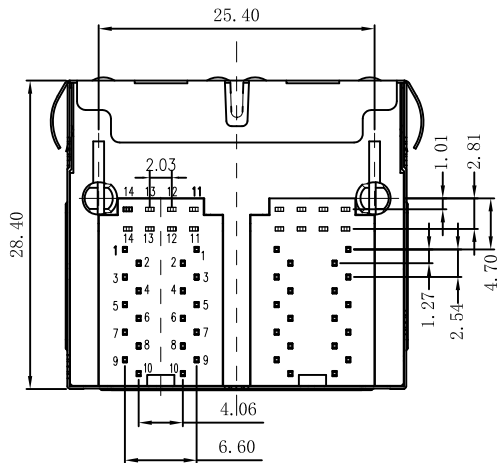
# Mechanical :

REV.	ECN NO.	DESCRIPTION	DATE	APPD
A	REL		2015/10/27	



## NOTES:

1. Designed to support application, such as SOHO (ADSL modems), LAN-on-Motherboard (LOM), hub and Switches.
2. Meets IEEE 802.3 specification
3. Connector Materials:  
Housing: Thermoplastic UL94V-0  
Contact/Shield: Copper alloy  
Shield plating: Nickel  
Contact plating: Gold 6 micro-inches min. In contact area.
4. Wave solder tip temperature: 265°C Max, 5 Sec Max.



X:X	±0.30	APPD:	LINK-PP INT'L TECHNOLOGY CO., LIMITED
X:XX	±0.25	CHKD:	
X:XXX	±0.05	DR: TOM	TITLE: RJ45 .Transformer.10/100 Base-T W/LED.2×2 Ports
ANGLES	±1°	UNIT: mm	PART NO.: LPJ27434AFNL
	SCALE: 2/1	SHEET: 2/2	REV: A DWG NO.: LP15102746