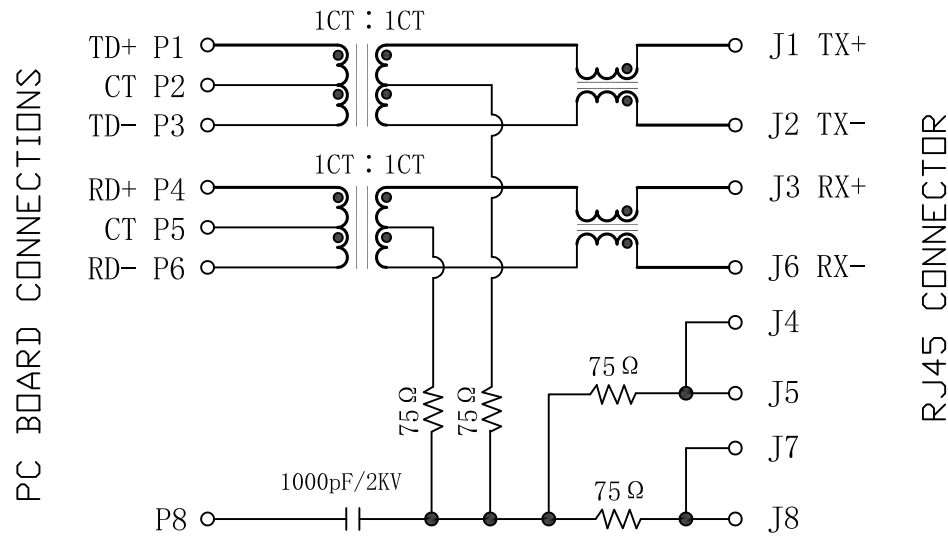


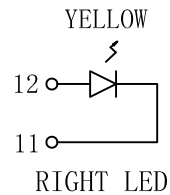
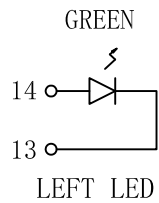
Schematic:

REV.	ECN NO.	DESCRIPTION	DATE	APPD
A	REL		2015-4-21	



Electrical Specifications @25°C

- Turns Ratio(±5%):
TX=1CT : 1CT RX=1CT : 1CT
- Inductance: 350uH MIN
@100KHz, 0.1V, 8mA DC Bias
- Insertion Loss:
1-80MHz: -1.0dB MAX
100MHz: -1.2dB MAX
- Return Loss:
1-60MHz: -14dB MIN
60-100MHz: -10dB MIN
- Crosstalk:
1-100MHz: -35dB MIN
- Common Mode Rejection:
1-100MHz: -30dB TYP
- Hipot: 1500Vrms
- Operating Temperature: -40°C ~ +85°C.

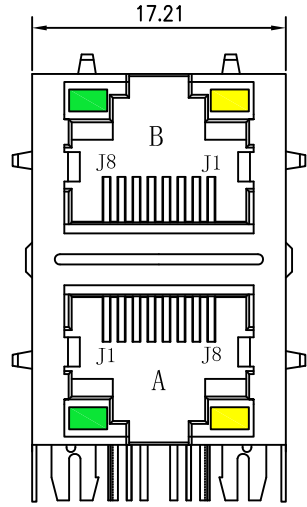


Emitting Color	λ p(nm)	VF@IF=20mA	IR @VR=5V
GREEN	565	1.8~2.6V	10 μ A max
YELLOW	585	1.8~2.6V	10 μ A max

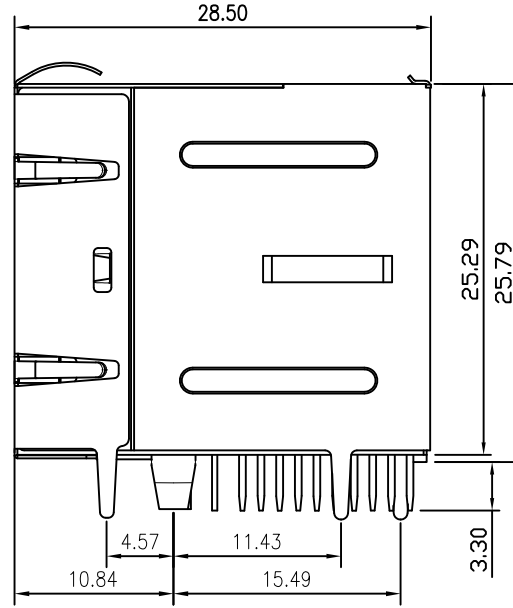
X:X	±0.30	APPD:	LINK-PP INT'L TECHNOLOGY CO., LIMITED	
X:XX	±0.25	CHKD:	TITLE: 2*1 RJ45 Connector with 10/100 Base-T Integrated Magnetics	
X:XXX	±0.05	DR: TOM	PART NO. : LPJ17402AHNL	
ANGLES	±1°	UNIT: mm	DWG NO. : LP14011131	
	SCALE: 2/1	SHEET: 1/2	REV: A	

Mechanical:

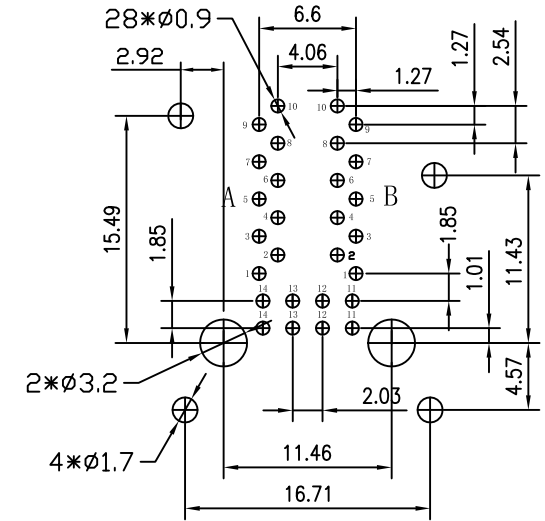
REV.	ECN NO.	DESCRIPTION	DATE	APPD
A	REL		2015-4-21	



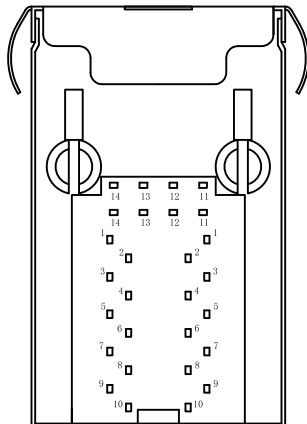
Front Side View



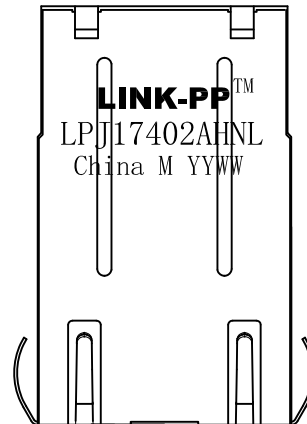
Left Side View



Suggested PCB Layout (Top View)



Bottom Side View



Top Side View

NOTES:

1. Meets IEEE 802.3 specification
2. Connector Materials:
 - Housing Material: Thermoplastic PBT+30%G.F UL94V-0
 - Contact Material: Phosphor Bronze C5210R-EH Thickness=0.35mm
 - Pins: Brass C2680R-H Thickness=0.35mm
 - Shield: Copper alloy Brass H65Y Thickness=0.20mm
 - Shield plating: Nickel
 - Contact plating: Gold 6 micro-inches min. In contact area.
3. Wave solder tip temperature: 265°C Max, 5 Sec.
4. UL Certification: File Number E484635.

X:X	±0.30	APPD:	LINK-PP INT'L TECHNOLOGY CO., LIMITED	
X:XX	±0.25	CHKD:	TITLE: 2*1 RJ45 Connector with 10/100 Base-T Integrated Magnetics	
X:XXX	±0.05	DR: TOM	PART NO.: LPJ17402AHNL	
ANGLES	±1°	UNIT: mm	DWG NO.: LP14011131	
	SCALE: 2/1	SHEET: 2/2	REV: A	