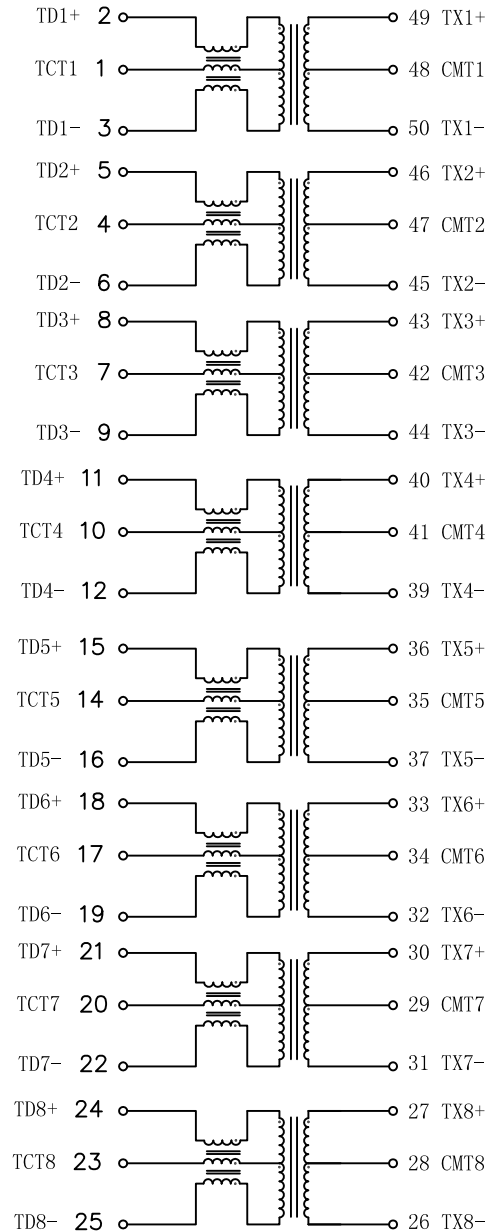


Schematic:

REV.	ECN NO.	DESCRIPTION	DATE	APPD
A	REL		2021-02-06	



Electrical Specification @25°C

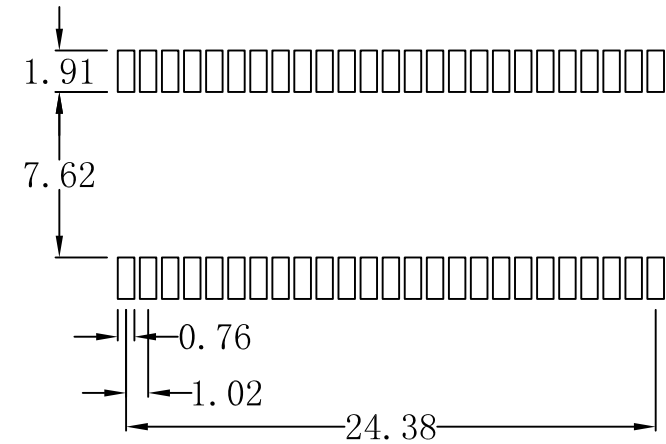
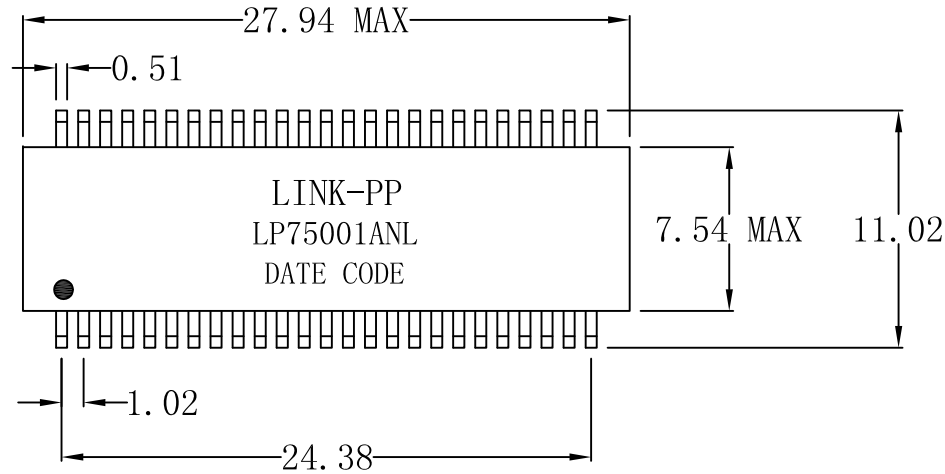
- Turns Ratio:
Pri : Sec = 1CT : 1CT ±2%
- Inductance (OCL):
180uH Min @100KHz, 100mV.
- Insertion Loss (dB Max):
1-50MHz: -0.5 50-125MHz: -1.0
- Return Loss (dB Min @Z OUT = 100 OHMS ±1%):
1-40MHz: -20
40-200MHz: -20+15*LOG₁₀(f/40)
- Crosstalk (dB Min):
1-125MHz: -30
- Common Mode Rejection Ratio (dB Min):
30-200MHz: -30
- Common to Differential Mode Rejection (dB Min):
10-125MHz: -45+f/35
- Hipot: Input - Output: 1500Vrms Min @60 Seconds
- Operating Temperature: -40°C ~ +85°C.



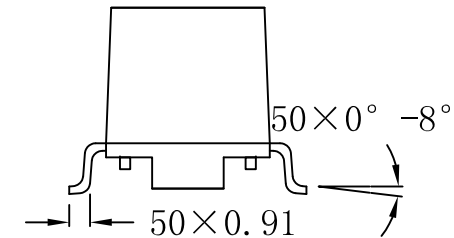
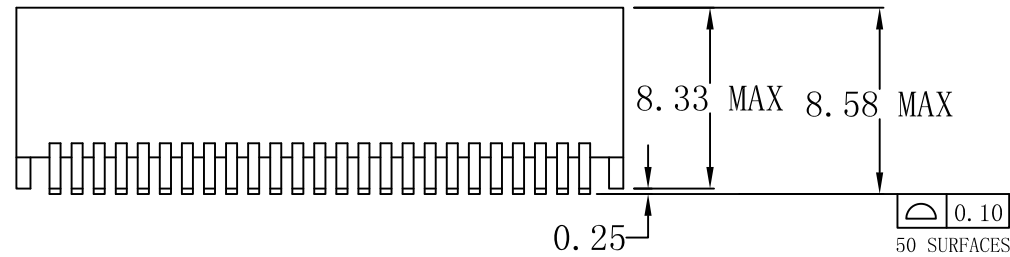
X:X	APPD:	LINK-PP INT'L TECHNOLOGY CO., LIMITED		
X:XX ±0.25	CHKD:	TITLE: 2.5G Base-T Magnetic Modules		
X:XXX	DR: TOM	PART NO.: LP75001ANL		
ANGLES ±1°	UNIT: mm			
	SCALE: 2/1	SHEET: 1/2	REV: A	DWG NO.: LP21020615

Mechanical:

REV.	ECN NO.	DESCRIPTION	DATE	APPD
A	REL		2021-02-06	



SUGGESTED PAD LAYOUT



NOTES:

1. Designed to support application, such as SOHO (ADSL modems), LAN-on-Motherboard (LOM), hub and Switches.
2. Meets IEEE 802.3 specification.
3. Maximum reflow temperature is 250°C, 5 Sec.
4. UL certification: file number E484635.



X:X	APPD:	LINK-PP INT'L TECHNOLOGY CO., LIMITED
X:XX ±0.25	CHKD:	
X:XXX	DR: TOM	TITLE: 2.5G Base-T Magnetic Modules
ANGLES ±1°	UNIT: mm	PART NO.: LP75001ANL
	SCALE: 2/1	SHEET: 2/2
	REV: A	DWG NO.: LP21020615